

Supplementary Appendix

Table SA.1: Correlation Results for *Full Name Matches*

Correlation	All aliases		
<u>All White Legislators</u>	0.34 [0.17, 0.49] 117		
Answered/White Alias			
N (aliases)			
Correlation	White aliases	Black aliases	Latino aliases
<u>All White Legislators</u>			
Responded/ Political Resources	0.10 [-0.19, 0.38]	-0.12 [-0.45, 0.24]	-0.30 [-0.56, 0.02]
<u>White Democratic Legislators</u>			
Responded/Democrat	-0.09 [-0.37, 0.20]	-0.15 [-0.47, 0.21]	-0.08 [-0.38, 0.25]
Responded/Republican	0.20 [-0.10, 0.46]	0.12 [-0.23, 0.45]	-0.10 [-0.40, 0.22]
<u>White Republican Legislators</u>			
Responded/Democrat	0.07 [-0.22, 0.35]	-0.21 [-0.52, 0.15]	0.14 [-0.18, 0.44]
Responded/Republican	-0.04 [-0.33, 0.25]	0.14 [-0.21, 0.47]	-0.18 [-0.47, 0.15]
N (aliases)	46	32	39
N (matches)	13,323	644	47,297

Note: The table reports Pearson's correlation coefficients for a two-sided test. 95% confidence intervals in square brackets. Significant correlations are highlighted in **bold**. *Political Resources* refers to the first dimension extracted from a factor analysis including the variables for income, education, housing, and turnout. The eigenvalue of the first factor is 2.21.

Table SA.2: Pooled Effects of Race, Political Resources, and Partisanship for *Full Name Matches*

	Outcome Variable: Responded Yes/No			
	(1)	(2)	(3)	(4)
Black	-0.290	-0.335	-0.313	-0.323
Alias	(0.064)	(0.093)	(0.065)	(0.094)
Latino	-0.252	-0.267	-0.250	-0.256
Alias	(0.064)	(0.078)	(0.065)	(0.078)
Political Resources		-0.008 (0.028)		-0.004 (0.028)
Copartisan			-0.132 (0.095)	-0.130 (0.096)
Constant	0.307 (0.046)	0.317 (0.056)	0.351 (0.055)	0.355 (0.063)
N (emails)	5,939	5,627	5,627	5,627
N (aliases)	117	117	117	117
N (matches)	61,264	61,264	61,264	61,264
Log Likelihood	-4,092.739	-3,876.628	-3,875.713	-3,875.703
Akaike Inf. Crit.	8,191.477	7,761.256	7,759.425	7,761.406

Note: Table entries are logit regression coefficients with standard errors in parentheses. Only white legislators are included in the analysis. *Political Resources* refers to the first dimension extracted from a factor analysis including the variables for income, education, housing, and turnout. The eigenvalue of the first factor is 2.73. Significance at the 95% level is highlighted in **bold**, one-tailed tests.

Table SA.3: Correlation Results for *at Least 2,000 matches*

Correlation	All aliases		
<u>All White Legislators</u>	0.34 [0.15, 0.51] 95		
Answered/White Alias			
N (aliases)			
Correlation	White aliases	Black aliases	Latino aliases
<u>All White Legislators</u>			
Responded/ Political Resources	-0.05 [-0.33, 0.25]	-0.32 [-0.64, 0.08]	-0.08 [-0.47, 0.33]
<u>White Democratic Legislators</u>			
Responded/Democrat	0.15 [-0.15, 0.42]	-0.32 [-0.64, 0.09]	0.08 [-0.33, 0.47]
Responded/Republican	-0.02 [-0.31, 0.27]	-0.08 [-0.46, 0.33]	-0.01 [-0.41, 0.40]
<u>White Republican Legislators</u>			
Responded/Democrat	-0.10 [-0.38, 0.20]	-0.10 [-0.47, 0.31]	-0.07 [-0.46, 0.34]
Responded/Republican	0.01 [-0.28, 0.30]	-0.05 [-0.44, 0.35]	-0.11 [-0.49, 0.30]
N (aliases)	46	25	24
N (matches)	6,165,604	399,854	2,715,803

Note: The table reports Pearson's correlation coefficients for a two-sided test. 95% confidence intervals in square brackets. Significant correlations are highlighted in **bold**. *Political Resources* refers to the first dimension extracted from a factor analysis including the variables for income, education, housing, and turnout. The eigenvalue of the first factor is 2.73.

Table SA.4: Pooled Effects of Race, Political Resources, and Partisanship for *at Least 2,000 matches*

	Outcome Variable: Responded Yes/No			
	(1)	(2)	(3)	(4)
Black	-0.308	-0.384	-0.307	-0.379
Alias	(0.067)	(0.089)	(0.067)	(0.089)
Latino	-0.261	-0.278	-0.256	-0.273
Alias	(0.065)	(0.067)	(0.065)	(0.067)
Political Resources		-0.043 (0.034)		-0.041 (0.034)
Copartisan			-0.099 (0.134)	-0.081 (0.135)
Constant	0.307 (0.046)	0.333 (0.050)	0.338 (0.062)	0.357 (0.064)
N (emails)	5,517	5,517	5,517	5,517
N (aliases)	95	95	95	95
N (matches)	9,281,261	9,281,261	9,281,261	9,281,261
Log Likelihood	-3,800.564	-3,799.736	-3,800.291	-3,799.554
Akaike Inf. Crit.	7,607.129	7,607.472	7,608.581	7,609.108

Note: Table entries are logit regression coefficients with standard errors in parentheses. Only white legislators are included in the analysis. *Political Resources* refers to the first dimension extracted from a factor analysis including the variables for income, education, housing, and turnout. The eigenvalue of the first factor is 2.73. Significance at the 95% level is highlighted in **bold**, one-tailed tests.

Table SA.5: Pooled Effects of Race, Political Resources, and Partisanship *Weighted by # of Matches*

	Outcome Variable: Responded Yes/No			
	(1)	(2)	(3)	(4)
Black	-0.326	-0.385	-0.326	-0.390
Alias	(0.127)	(0.147)	(0.127)	(0.147)
Latino	-0.334	-0.359	-0.336	-0.363
Alias	(0.056)	(0.065)	(0.057)	(0.065)
Political Resources		-0.030 (0.037)		-0.032 (0.038)
Copartisan			0.076 (0.171)	0.093 (0.172)
Constant	0.365 (0.039)	0.396 (0.055)	0.341 (0.068)	0.368 (0.075)
N (emails)	5,880	5,880	5,880	5,880
N (aliases)	101	101	101	101
N (matches)	9,288,421	9,288,421	9,288,421	9,288,421
Log Likelihood	-3,301.423	-3,301.035	-3,301.229	-3,300.766
Akaike Inf. Crit.	6,608.846	6,610.070	6,610.457	6,611.532

Note: Table entries are coefficients from a series of weighted logit regressions with standard errors in parentheses. Weights were specified as the number of matches for each alias divided by 100,000 and assume that there is more certainty about the signal each alias sends if there are more people with that name. Only white legislators are included in the analysis. *Political Resources* refers to the first dimension extracted from a factor analysis including the variables for income, education, housing, and turnout. The eigenvalue of the first factor is 2.73. Significance at the 95% level is highlighted in **bold**, one-tailed tests.

Table SA.6: Correlation Results for *Responded in a Timely Manner*

Correlation	All aliases		
<u>All White Legislators</u>	0.32 [0.13, 0.48] 101		
Timely/White Alias			
N (aliases)			
Correlation	White aliases	Black aliases	Latino aliases
<u>All White Legislators</u>			
<u>Timely/Political Resources</u>	-0.08 [-0.36, 0.22]	-0.40 [-0.67, -0.04]	-0.08 [-0.45, 0.32]
<u>White Democratic Legislators</u>			
Timely/Democrat	0.15 [-0.14, 0.43]	-0.10 [-0.45, 0.27]	-0.03 [-0.42, 0.36]
Timely/Republican	-0.01 [-0.30, 0.28]	-0.25 [-0.56, 0.13]	0.06 [-0.33, 0.44]
<u>White Republican Legislators</u>			
Timely/Democrat	-0.17 [-0.44, 0.13]	-0.12 [-0.47, 0.26]	-0.05 [-0.43, 0.34]
Timely/Republican	0.01 [-0.28, 0.30]	-0.12 [-0.46, 0.26]	-0.11 [-0.47, 0.29]
N (aliases)	46	29	26
N (matches)	6,165,604	404,943	2,717,874

Note: The table reports Pearson's correlation coefficients for a two-sided test. 95% confidence intervals in square brackets. Significant correlations are highlighted in **bold**. *Political Resources* refers to the first dimension extracted from a factor analysis including the variables for income, education, housing, and turnout. The eigenvalue of the first factor is 2.73.

Table SA.7: Pooled Effects of Race, Political Resources, and Partisanship

	Outcome Variable: <i>Responded Timely</i> Yes/No			
	(1)	(2)	(3)	(4)
Black	-0.262	-0.363	-0.261	-0.359
Alias	(0.064)	(0.086)	(0.064)	(0.086)
Latino	-0.245	-0.262	-0.240	-0.258
Alias	(0.064)	(0.064)	(0.064)	(0.065)
Political Resources		-0.057		-0.055
		(0.032)		(0.032)
Copartisan			-0.107	-0.084
			(0.129)	(0.129)
Constant	0.078	0.112	0.112	0.137
	(0.045)	(0.049)	(0.061)	(0.062)
N (emails)	5,880	5,880	5,880	5,880
N (aliases)	101	101	101	101
N (matches)	9,288,421	9,288,421	9,288,421	9,288,421
Log Likelihood	-4,059.262	-4,057.673	-4,058.917	-4,057.463
Akaike Inf. Crit.	8,124.524	8,123.346	8,125.835	8,124.926

Note: Table entries are logit regression coefficients with standard errors in parentheses. Only white legislators are included in the analysis. *Political Resources* refers to the first dimension extracted from a factor analysis including the variables for income, education, housing, and turnout. The eigenvalue of the first factor is 2.73. Significance at the 95% level is highlighted in **bold**, one-tailed tests.

Table SA.8: Correlation Results for *Question Answered*

Correlation	All aliases		
<u>All White Legislators</u>	0.32 [0.13, 0.48] 101		
Answered/White Alias			
N (aliases)			
Correlation	White aliases	Black aliases	Latino aliases
<u>All White Legislators</u>			
Answered/ Political Resources	-0.02 [-0.30, 0.28]	-0.39 [-0.66, -0.02]	-0.01 [-0.39, 0.38]
<u>White Democratic Legislators</u>			
Answered/Democrat	0.16 [-0.14, 0.43]	-0.06 [-0.42, 0.31]	0.03 [-0.37, 0.41]
Answered/Republican	-0.09 [-0.37, 0.20]	-0.29 [-0.59, 0.09]	-0.01 [-0.40, 0.38]
<u>White Republican Legislators</u>			
Answered/Democrat	0.01 [-0.28, 0.30]	-0.07 [-0.42, 0.31]	-0.15 [-0.51, 0.25]
Answered/Republican	-0.04 [-0.33, 0.25]	-0.12 [-0.47, 0.26]	0.08 [-0.32, 0.45]
N (aliases)	46	29	26
N (matches)	6,165,604	404,943	2,717,874

Note: The table reports Pearson's correlation coefficients for a two-sided test. 95% confidence intervals in square brackets. Significant correlations are highlighted in **bold**. *Political Resources* refers to the first dimension extracted from a factor analysis including the variables for income, education, housing, and turnout. The eigenvalue of the first factor is 2.73.

Table SA.9: Pooled Effects of Race, Political Resources, and Partisanship

	Outcome Variable: <i>Answered Question</i> Yes/No			
	(1)	(2)	(3)	(4)
Black	-0.271	-0.353	-0.272	-0.358
Alias	(0.065)	(0.087)	(0.065)	(0.087)
Latino	-0.266	-0.280	-0.269	-0.285
Alias	(0.064)	(0.065)	(0.065)	(0.065)
Political Resources		-0.046 (0.032)		-0.048 (0.032)
Copartisan			0.063 (0.130)	0.083 (0.131)
Constant	-0.119 (0.045)	-0.091 (0.049)	-0.138 (0.061)	-0.116 (0.063)
N (emails)	5,880	5,880	5,880	5,880
N (aliases)	101	101	101	101
N (matches)	9,288,421	9,288,421	9,288,421	9,288,421
Log Likelihood	-4,000.345	-3,999.322	-4,000.228	-3,999.120
Akaike Inf. Crit.	8,006.689	8,006.644	8,008.456	8,008.239

Note: Table entries are logit regression coefficients with standard errors in parentheses. Only white legislators are included in the analysis. *Political Resources* refers to the first dimension extracted from a factor analysis including the variables for income, education, housing, and turnout. The eigenvalue of the first factor is 2.73. Significance at the 95% level is highlighted in **bold**, one-tailed tests.

Table SA.10: Bivariate Correlation Results for *White Legislators Only*

Correlation	White aliases	Black aliases	Latino aliases
<u>All White Legislators</u>			
Responded/Income	-0.12 [-0.39, 0.18]	0.16 [-0.22, 0.50]	0.03 [-0.36, 0.41]
Responded/Education	-0.01 [-0.30, 0.28]	0.05 [-0.32, 0.41]	0.06 [-0.33, 0.44]
Responded/Housing	-0.01 [-0.30, 0.28]	0.15 [-0.22, 0.49]	0.05 [-0.34, 0.43]
Responded/Turnout	-0.04 [-0.32, 0.26]	-0.38 [-0.66, -0.02]	-0.03 [-0.41, 0.37]
N (aliases)	46	29	26
N (matches)	6,165,604	404,943	2,717,874

Note: The table reports Pearson's correlation coefficients for a two-sided test. 95% confidence intervals in square brackets. Significant correlations are highlighted in **bold**.

Table SA.11: Pooled Effects of Race, Indicators of Political Resources, and their *Standard Deviations*

	Outcome Variable: Responded Yes/No				
	(1)	(2)	(3)	(4)	(5)
Minority Alias	-0.255 (0.107)	-0.248 (0.109)	-0.183 (0.084)	-0.293 (0.057)	-0.232 (0.149)
Income (Mean)	-0.041 (0.113)				-0.008 (0.186)
Income (Std Dev)	0.293 (0.275)				1.009 (0.634)
Education (Mean)		-0.008 (0.131)			-0.202 (0.318)
Education (Std Dev)		0.259 (0.167)			0.168 (0.546)
Housing (Mean)			-0.108 (0.169)		-0.219 (0.252)
Housing (Std Dev)			0.179 (0.172)		0.156 (0.233)
Turnout (Mean)				-0.113 (0.054)	-0.139 (0.065)
Turnout (Std Dev)				0.214 (0.116)	0.057 (0.149)
Constant	-0.071 (0.461)	0.093 (1.665)	0.113 (0.177)	0.130 (0.158)	1.091 (3.280)
N (emails)	5,880	5,880	5,880	5,880	5,880
N (aliases)	101	101	101	101	101
N (matches)	9,288,421	9,288,421	9,288,421	9,288,421	9,288,421
Log Likelihood	-4,051.312	-4,050.844	-4,051.035	-4,049.882	-4,045.871
Akaike Inf. Crit.	8,110.623	8,109.688	8,110.069	8,107.764	8,111.741

Note: Table entries are logit regression coefficients with standard errors in parentheses. Only white legislators are included in the analysis. For each political resources indicator, the analyses include their respective mean values per alias as well as their standard deviations per alias. Significance at the 95% level is highlighted in **bold**, one-tailed tests.

Table SA.12: Correlation Results *Excluding Jill Smith*

Correlation	All aliases		
<u>All White Legislators</u>	0.46 [0.30, 0.61] 100		
Answered/White Alias			
N (aliases)			
Correlation	White aliases	Black aliases	Latino aliases
<u>All White Legislators</u>			
Responded/ Political Resources	0.19 [-0.11, 0.46]	-0.31 [-0.61, 0.06]	-0.01 [-0.39, 0.38]
<u>White Democratic Legislators</u>			
Responded/Democrat	0.20 [-0.10, 0.47]	-0.27 [-0.58, 0.10]	0.12 [-0.28, 0.48]
Responded/Republican	0.09 [-0.21, 0.37]	-0.12 [-0.47, 0.25]	-0.04 [-0.42, 0.35]
<u>White Republican Legislators</u>			
Responded/Democrat	-0.10 [-0.39, 0.20]	-0.11 [-0.46, 0.27]	-0.14 [-0.50, 0.26]
Responded/Republican	0.14 [-0.16, 0.41]	0.01 [-0.36, 0.37]	0.02 [-0.37, 0.41]
N (aliases)	45	29	26
N (matches)	6,004,564	404,943	2,717,874

Note: The table reports Pearson's correlation coefficients for a two-sided test. 95% confidence intervals in square brackets. Significant correlations are highlighted in **bold**. *Political Resources* refers to the first dimension extracted from a factor analysis including the variables for income, education, housing, and turnout. The eigenvalue of the first factor is 2.73.

Table SA.13: Pooled Effects of Race, Political Resources, and Partisanship *Excluding Jill Smith*

	Outcome Variable: Responded Yes/No			
	(1)	(2)	(3)	(4)
Black	-0.343	-0.334	-0.342	-0.330
Alias	(0.065)	(0.086)	(0.065)	(0.087)
Latino	-0.302	-0.301	-0.299	-0.297
Alias	(0.064)	(0.065)	(0.065)	(0.065)
Political Resources		0.005 (0.033)		0.007 (0.033)
Copartisan			-0.061 (0.128)	-0.064 (0.129)
Constant	0.357 (0.046)	0.355 (0.050)	0.377 (0.061)	0.374 (0.063)
N (emails)	5,839	5,839	5,839	5,839
N (aliases)	100	100	100	100
N (matches)	9,127,381	9,127,381	9,127,381	9,127,381
Log Likelihood	-4,016.074	-4,016.062	-4,015.959	-4,015.939
Akaike Inf. Crit.	8,038.148	8,040.124	8,039.919	8,041.877

Note: Table entries are logit regression coefficients with standard errors in parentheses. Only white legislators are included in the analysis. *Political Resources* refers to the first dimension extracted from a factor analysis including the variables for income, education, housing, and turnout. The eigenvalue of the first factor is 2.73. Significance at the 95% level is highlighted in **bold**, one-tailed tests.

Table SA.14: Correlation Matrix of Political Resources and Constituting Indicators

	Political Resources	Income	Education	Housing	Turnout
Political Resources	1.000				
Income	0.709	1.000			
Education	0.561	0.866	1.000		
Housing	0.757	0.870	0.705	1.000	
Turnout	0.901	0.375	0.231	0.458	1.000

Note: Table entries are Spearman correlation coefficients. *Political Resources* refers to the first dimension extracted from a factor analysis including the variables for income, education, housing, and turnout. The standard deviation of the first factor is 1.1691, the proportion of variance is 0.6816, and the eigenvalue is 2.7264.

Figure SA.1: Relationship Between Average Response Rates (White Legislators) and Political Resources Factor Score

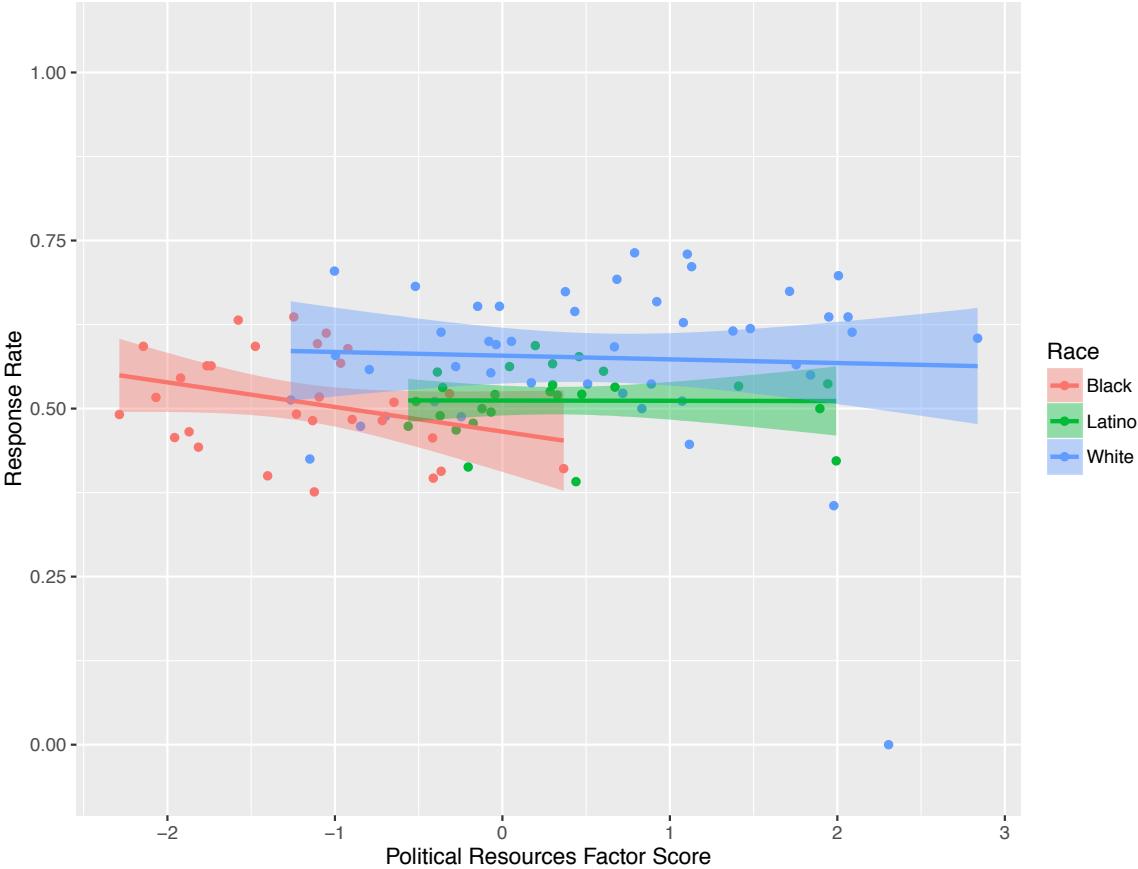


Table SA.15: Aliases and Additional Information

	Name	Race	Emails sent	Response rate
1	Abigail Smith	W	54	0.57
2	Alaliyah Booker	B	64	0.52
3	Alexus Banks	B	65	0.45
4	Alfonso Gonzalez	L	51	0.51
5	Allison Nelson	W	54	0.50
6	Amy Mueller	W	54	0.56
7	Anne Evans	W	54	0.52
8	Beatriz Ibarra	L	53	0.49
9	Beatriz Martinez	L	53	0.64
10	Blanca Ramirez	L	53	0.53
11	Bradley Schwartz	W	54	0.63
12	Brett Clark	W	53	0.64
13	Caitlin Schneider	W	53	0.51
14	Carlita Torres	L	52	0.52
15	Carlos Perez	L	53	0.47
16	Carlos Torres	L	52	0.52
17	Carly Smith	W	54	0.50
18	Carmela Velazquez	L	53	0.51
19	Carmen Barajas	L	53	0.49
20	Carmen Lopez	L	52	0.54
21	Carola Huerta	L	53	0.51
22	Carola Ibarra	L	53	0.58
23	Carrie King	W	54	0.56
24	Catalina Hernandez	L	53	0.53
25	Catalina Jaurez	L	53	0.47
26	Cesar Vazquez	L	53	0.47
27	Cesar Zavala	L	53	0.55
28	Claire Schwartz	W	55	0.56
29	Cody Anderson	W	52	0.46
30	Cole Krueger	W	53	0.58
31	Colin Smith	W	54	0.50
32	Connor Schwartz	W	54	0.54
33	Darius Joseph	B	64	0.59

Table SA.15: Aliases and Additional Information (continued)

	Name	Race	Emails sent	Response rate
34	Darnell Banks	B	65	0.51
35	DeAndre Jefferson	B	65	0.51
36	DeShawn Korsev	B	65	0.52
37	Deja Jefferson	B	65	0.46
38	Deja Mosley	B	65	0.42
39	Dolores Ramirez	L	52	0.52
40	Dolores Sanchez	L	52	0.37
41	Dominique Mosley	B	65	0.49
42	Dustin Nelson	W	54	0.54
43	Dylan Schwartz	W	53	0.51
44	Ebony Mosley	B	65	0.45
45	Ebony Washington	B	66	0.29
46	Edgar Sanchez	L	53	0.51
47	Edgar Zavala	L	53	0.64
48	Eduardo Lopez	L	53	0.40
49	Eduardo Torres	L	52	0.48
50	Emily Schmidt	W	54	0.56
51	Emma Clark	W	54	0.46
52	Enrique Huerta	L	53	0.53
53	Garrett Novak	W	53	0.57
54	Geoffrey Martin	W	54	0.31
55	Greg Adams	W	53	0.55
56	Hannah Phillips	W	54	0.46
57	Heather Martin	W	54	0.46
58	Hernan Garcia	L	53	0.55
59	Holly Schroeder	W	53	0.51
60	Hunter Miller	W	53	0.53
61	Jack Evans	W	54	0.59
62	Jada Mosley	B	64	0.48
63	Jake Clark	W	55	0.47
64	Jamal Gaines	B	65	0.58
65	Jamal Rivers	B	65	0.51
66	Jasmin Jefferson	B	65	0.58

Table SA.15: Aliases and Additional Information (continued)

	Name	Race	Emails sent	Response rate
67	Jasmine Joseph	B	65	0.57
68	Javier Gonzalez	L	53	0.49
69	Jay Allen	W	53	0.58
70	Jazmine Jefferson	B	65	0.51
71	Jenna Anderson	W	54	0.63
72	Jermaine Gaines	B	65	0.49
73	Jill Smith	W	54	0.00
74	Jorge Cervantes	L	53	0.47
75	Jose Martinez	L	53	0.49
76	Jose Orozco	L	53	0.53
77	Jose Sanchez	L	53	0.43
78	Juan Barajas	L	53	0.42
79	Juan Hernandez	L	53	0.49
80	Katelyn Miller	W	54	0.43
81	Katherine Adams	W	53	0.60
82	Kathryn Evans	W	54	0.54
83	Katie Novak	W	54	0.54
84	Keisha Rivers	B	64	0.41
85	Kiara Jackson	B	65	0.43
86	Kristen Clark	W	54	0.67
87	LaShawn Banks	B	65	0.49
88	LaShawn Washington	B	65	0.48
89	Latonya Rivers	B	65	0.37
90	Latoya Rivers	B	64	0.52
91	Logan Allen	W	54	0.63
92	Luis Hernandez	L	52	0.63
93	Luis Vazquez	L	53	0.47
94	Luke Phillips	W	54	0.48
95	Madeline Haas	W	54	0.65
96	Magdalena Perez	L	51	0.39
97	Margarita Garcia	L	53	0.53
98	Margarita Velazquez	L	53	0.49
99	Maria Ramirez	L	52	0.50

Table SA.15: Aliases and Additional Information (continued)

	Name	Race	Emails sent	Response rate
100	Maria Rodriguez	L	52	0.52
101	Matthew Anderson	W	53	0.57
102	Maxwell Haas	W	52	0.65
103	Molly Kruger	W	55	0.44
104	Pedro Rodriguez	L	52	0.44
105	Precious Washington	B	65	0.40
106	Rasheed Gaines	B	65	0.48
107	Raven Korsey	B	65	0.60
108	Rosa Orozco	L	53	0.55
109	Rosa Perez	L	53	0.53
110	Sarah Miller	W	54	0.59
111	Scott King	W	54	0.52
112	Shanice Booker	B	64	0.52
113	Tanner Smith	W	55	0.38
114	Teresa Jaurez	L	53	0.49
115	Terrance Booker	B	65	0.38
116	Todd Mueller	W	54	0.56
117	Tremayne Joseph	B	64	0.53
118	Trevon Jackson	B	65	0.55
119	Tyreke Washington	B	64	0.48
120	Tyrone Booker	B	65	0.46
121	Tyrone Joseph	B	62	0.52
122	Wyatt Smith	W	55	0.53
123	Xavier Jackson	B	65	0.46